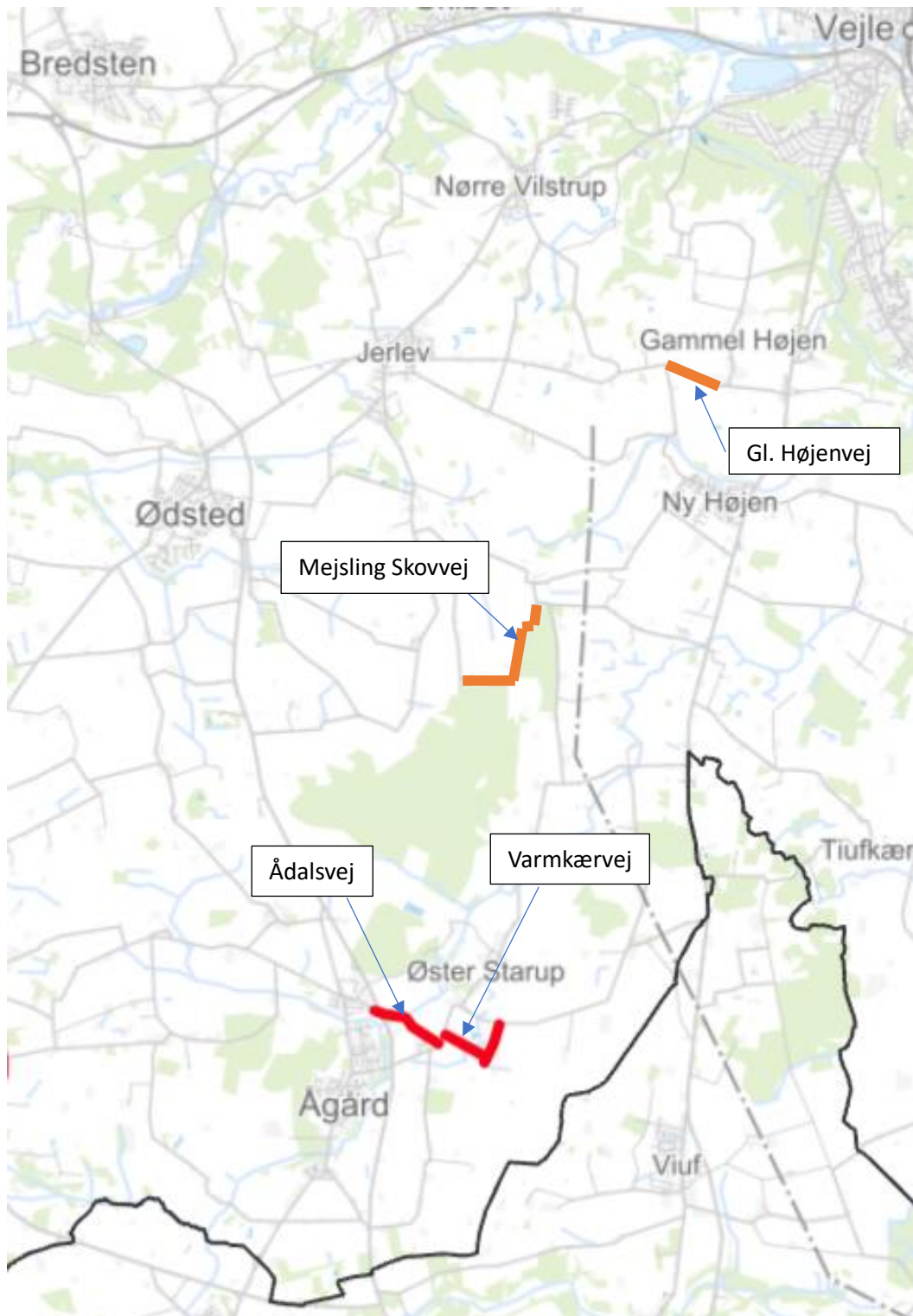


Distriktsnummer 2



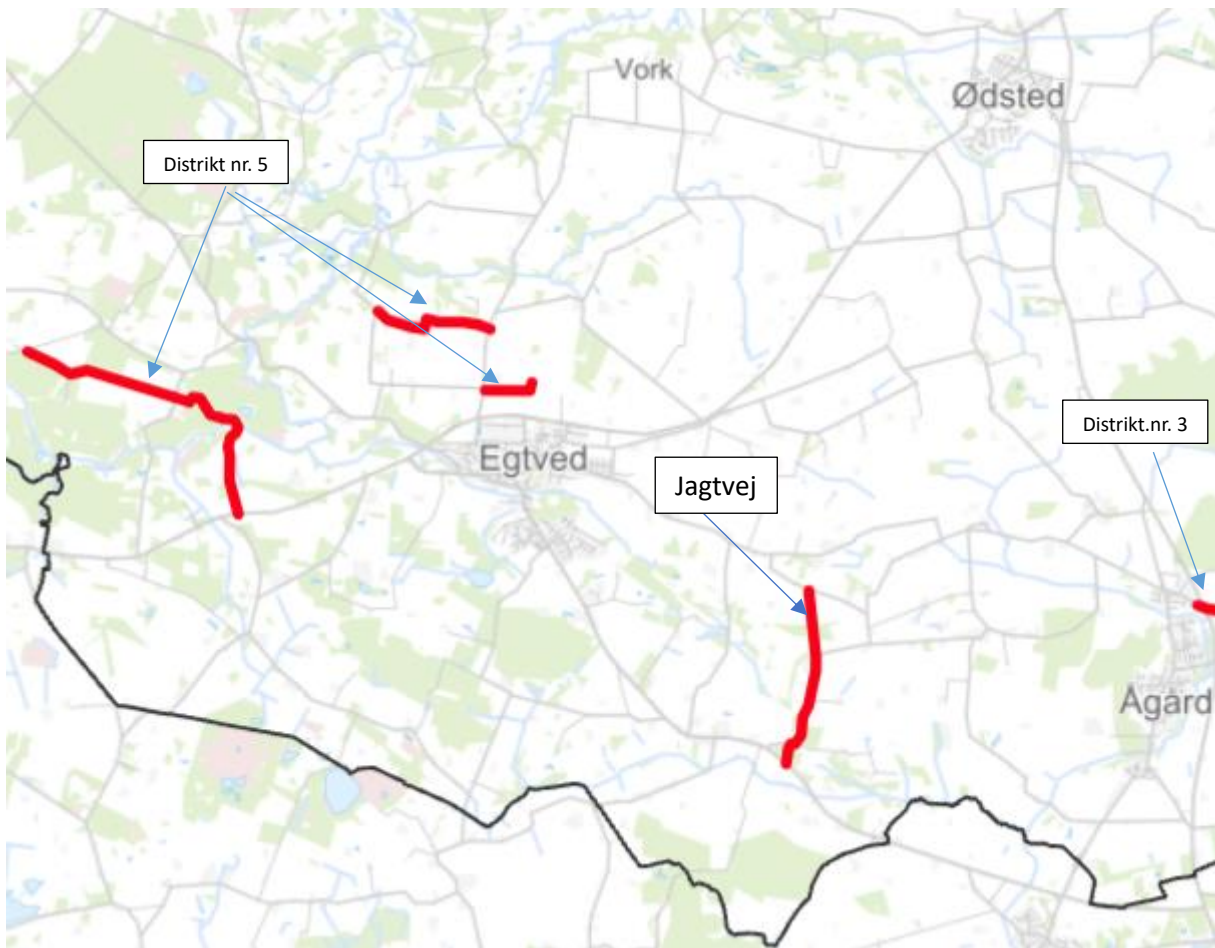
7,4 Km, i alt 14800m (for 2 sider) a 337kg/m. Giver ~ 5000 ton.

Distriktsnummer 3



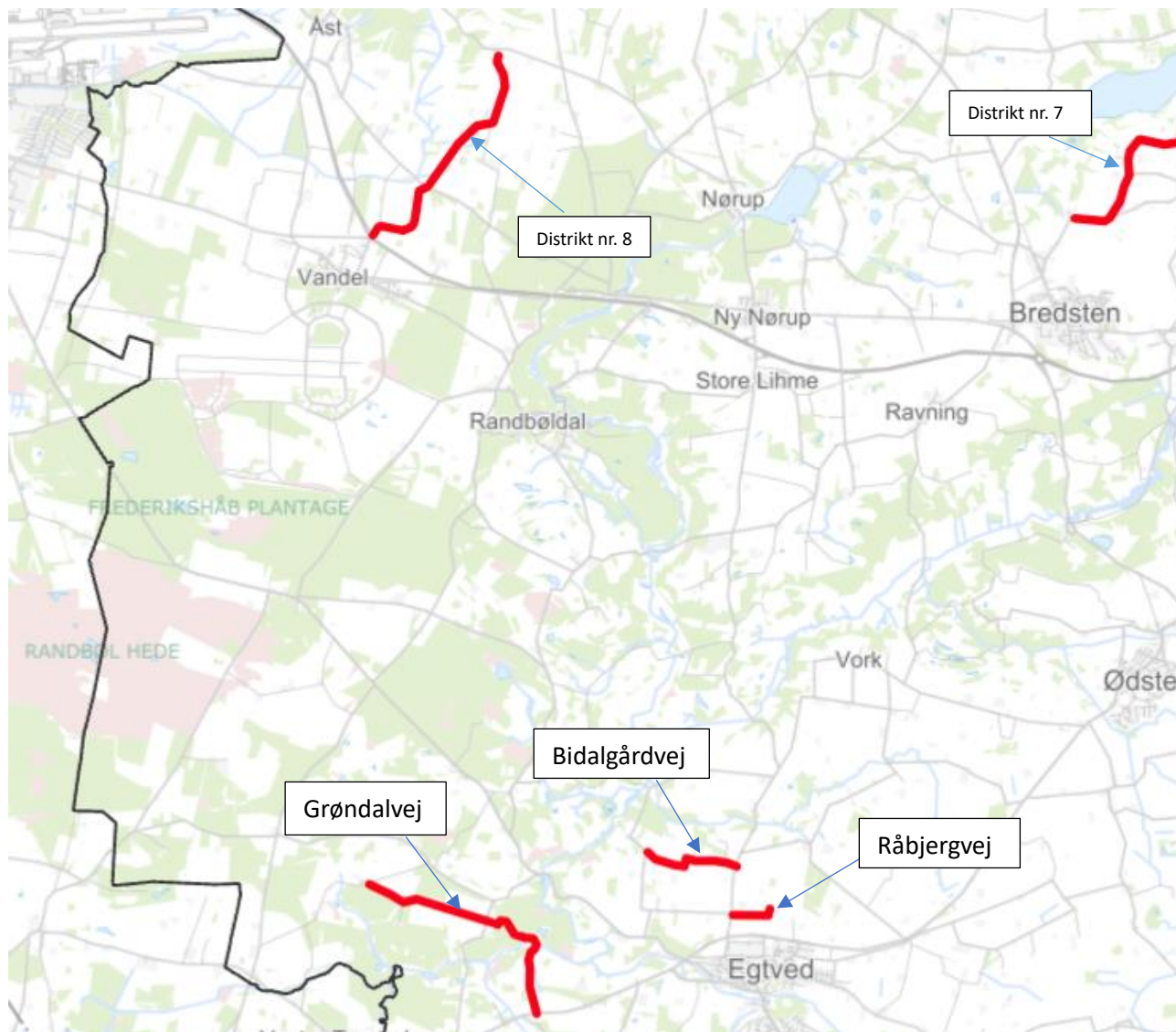
4,0 Km, i alt 8100m (for 2 sider) a 337kg/m. Giver ~ 2730 ton.

Distriktsnummer 4



2,2 Km, i alt 4400m (for 2 sider) a 337kg/m. Giver ~ 1480 ton.

Distriktsnummer 5



6,0 Km, i alt 11800m (for 2 sider) a 337kg/m. Giver ~ 3980 ton.

Distriktsnummer 6



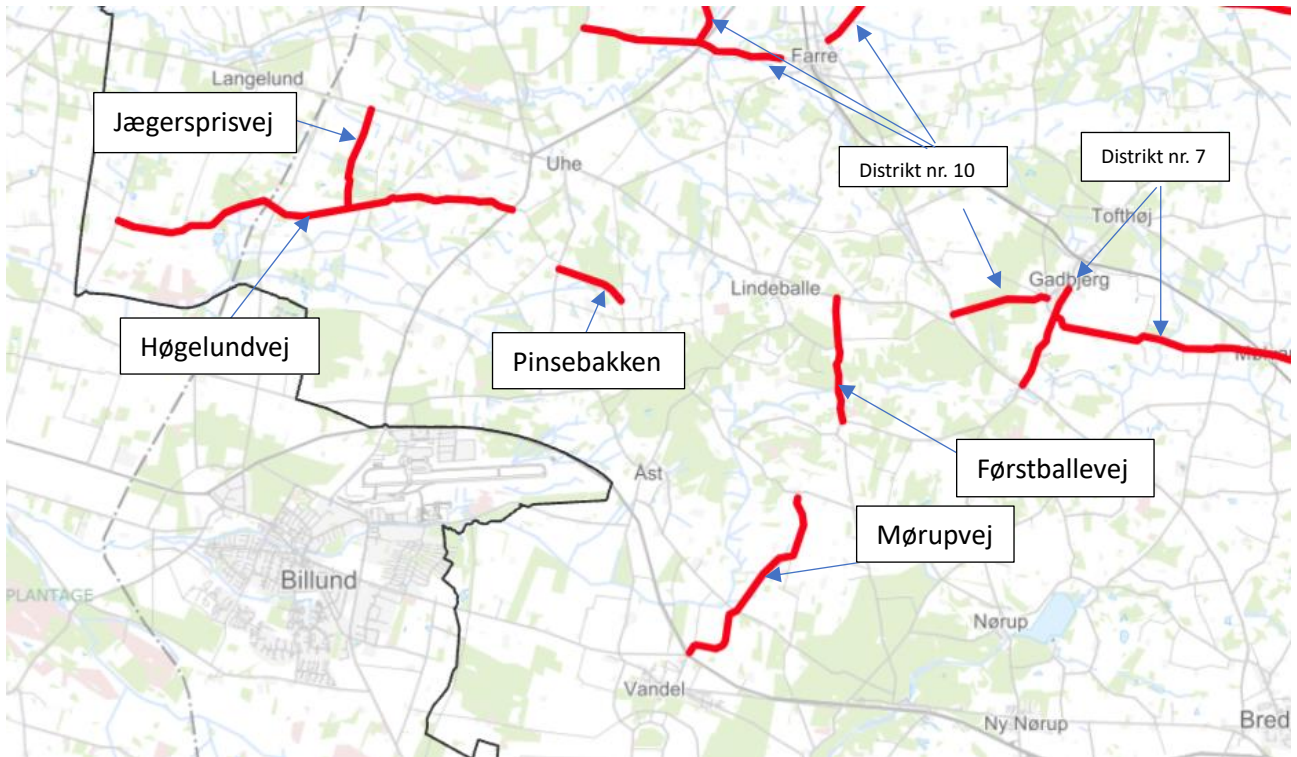
2,8 Km, i alt 5600m (for 2 sider) a 337kg/m. Giver ~ 1890 ton.

Distriktsnummer 7



15,3 Km, i alt 30600m (for 2 sider) a 337kg/m. Giver ~ 10300 ton.

Distriktsnummer 8



15,6 Km, i alt 31200m (for 2 sider) a 337kg/m. Giver ~ 10500 ton.

Distriktsnummer 9



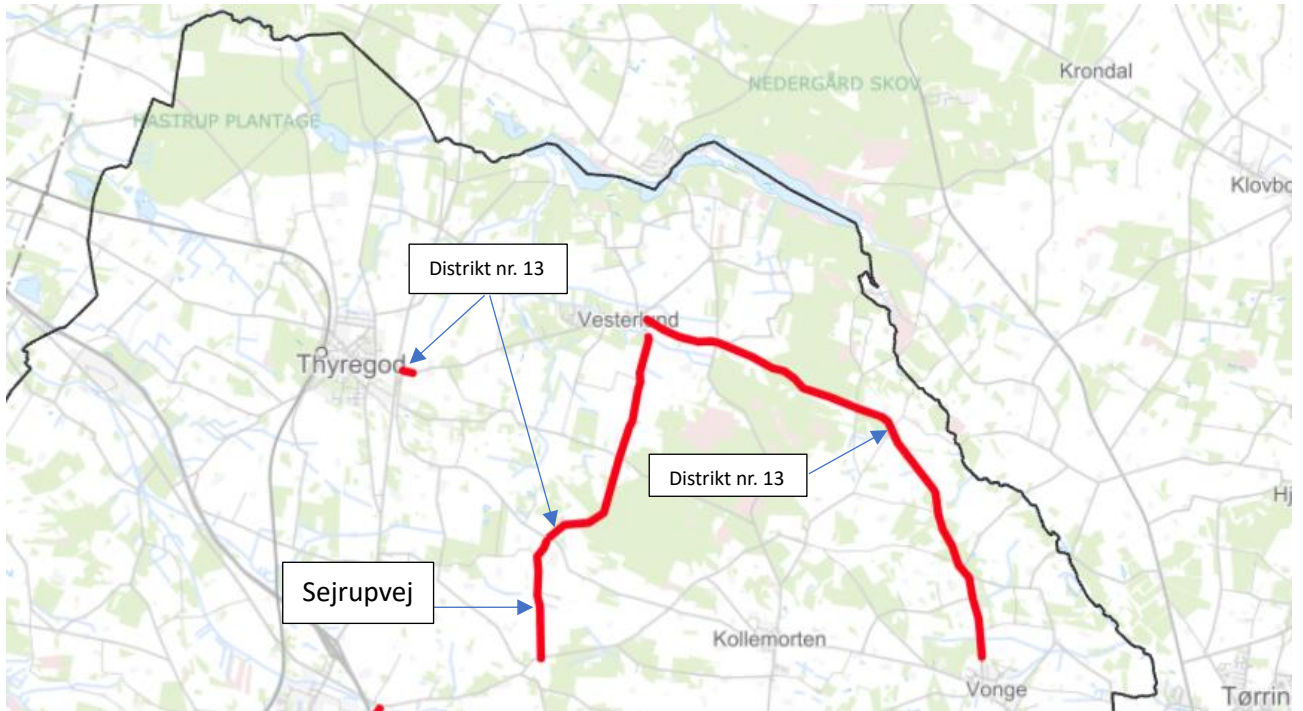
14,2 Km, i alt 28400m (for 2 sider) a 337kg/m. Giver ~ 9570 ton.

Distriktsnummer 10



17,1 Km, i alt 34200m (for 2 sider) a 337kg/m. Giver ~ 11530 ton.

Distriktsnummer 12



2,0 Km, i alt 4000m (for 2 sider) a 337kg/m. Giver ~ 1350 ton.

Distriktsnummer 13



12,2 Km, i alt 24400m (for 2 sider) a 337kg/m. Giver ~ 8220 ton.